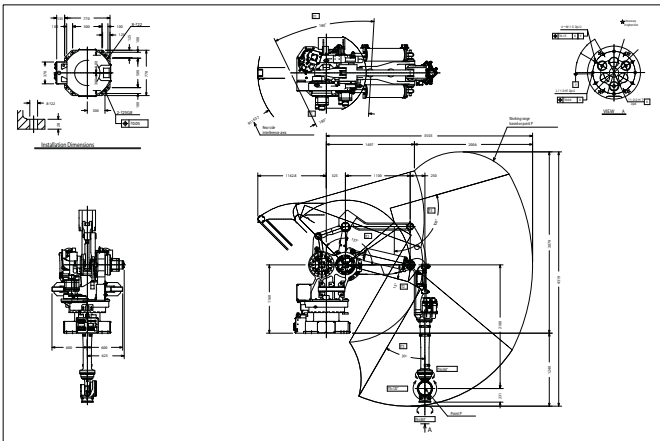


Standard Applications:

- Material Handling
- Machine Tending



Arm Type	Articulated		
Degrees of Freedom	6 (Optionally 7)		
Axes Work Envelope and Maximum Speed	Axis	Work Envelope	Maximum Speed
	Arm Rotation (JT1)	±180°	80° /s
	Arm Out-In (JT2)	+15° ~ -135°	70° /s
	Arm Up-Down (JT3)	+106° ~ -30°	70° /s
	Wrist Swivel (JT4)	± 360°	70° /s
	Wrist Bend (JT5)	± 120°	70° /s
	Wrist Twist (JT6)	± 360°	130° /s
	Linear Traverse	2000 mm (standard)	1000 mm/s
Position Repeatability	±0.5 mm (at the tool mounting surface)		
Payload	400 kg		
Maximum Linear Speed	2200 mm/s		
Wrist Load Capacity		Torque	Moment of Inertia
	JT4	2150 N*m	200 Kg*m ²
	JT5	2150 N*m	200 Kg*m ²
	JT6	980 N*m	147 Kg*m ²
Driving Motor	Brushless AC Servomotor		
Mass	2600 kg (excluding options)		
Color	Kawasaki Standard		
Installation	Shelf mount		
Ambient Temperature	0–45° C for manipulator		
Relative Humidity	35–85% non-condensing		
Pneumatic Piping	Built-in Pneumatic Piping (ø12 x 2 lines)		
	Wirings for valves to drive hand (DC 24V x 7 circuits)		
Power/Signal Cable Length	7 m		
IP Rating	Wrist—IP65; Arm—IP65		
Options	Power/Signal Cable Length: 10 m, 15 m		
	Adjustable Mechanical Stopper for JT1, JT2, JT3		
	Limit Switch for JT1, JT2, JT3		
	Solenoid Valve 1D/2D/1S/2S/1D1S		
Consult us about Maintenance Parts and Spare Parts.			